



Fingerlabyrinth

65990.00

Operating instructions

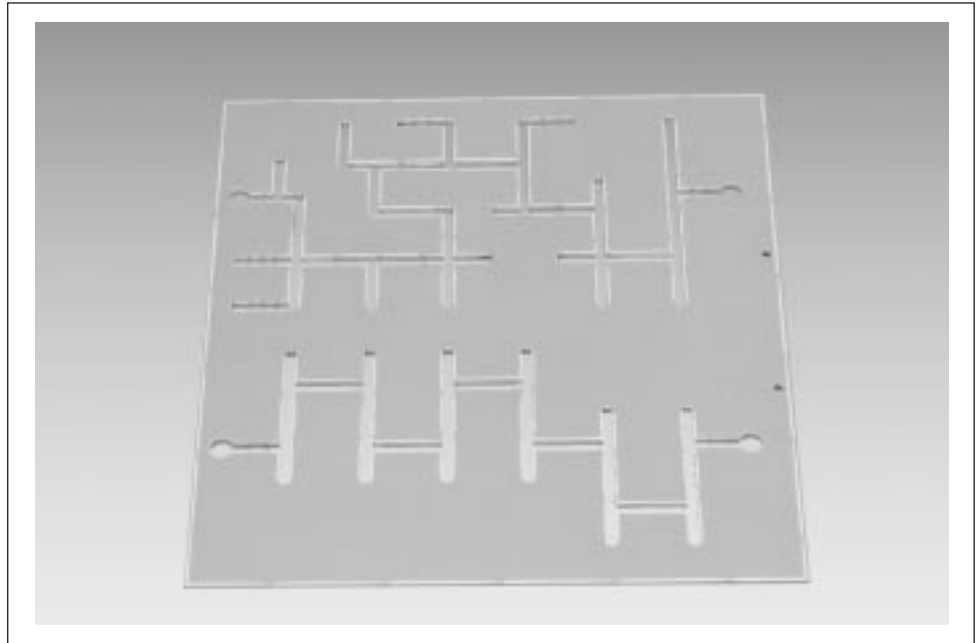
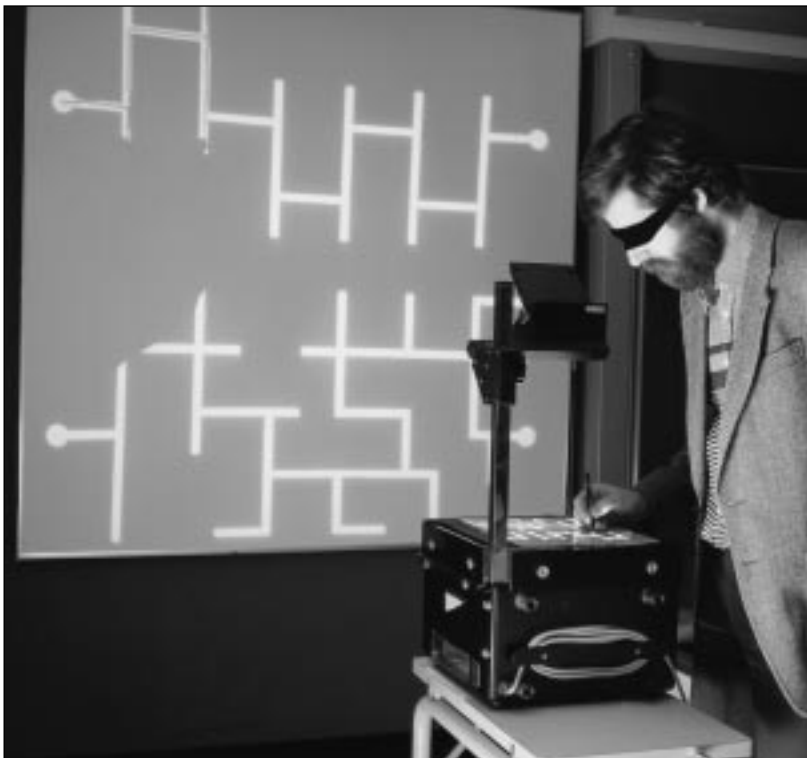


Fig. :1

### 1 PURPOSE AND DESCRIPTION

The finger labyrinth (Fig. 1) is used for the investigation of human learning behaviour. The device consists of a plastic plate in which holes and slots have been punched. The holes act as starting and finishing points for the slots which are connected together via numerous paths. Blindfolded, the test person finds the path along the slots to the finishing point using a pencil. The plate includes two labyrinths of different grades of difficulty.

The paths, correct and incorrect, are drawn out on an underlay of paper or transparent film and are then evaluated. If the experiment is conducted using an overhead projector (see Fig. 2), the complete class can participate. During the experiment move the pencil along the paths of the labyrinth without placing the hand on the plate. This avoids the additional orientation that this would provide.



### 2 EXPERIMENTAL LITERATURE

Laboratory Experiments

Physiology

16500.02

Fig. 2: Experimental arrangement on an overhead projector.